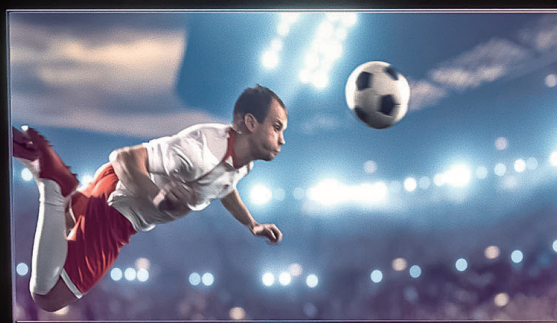




# NEW FROM SOLAX X1-HYB-LV



## X1-HYB-LV

3.0kW/3.7kW/4.0kW  
4.6kW/5.0kW/6.0kW

## Features

### High-efficiency

- 200% PV oversized and up to 110% AC output
- 200% peak EPS apparent power, 10 s
- Built-in shadow tracking

### Economic

- Max. DC input current 16A, support for high power solar panel
- Low start up voltage brings longer operation time

### Intelligent

- UPS-level switching time < 10 ms
- CT compatible, loads respond within 0.3 s
- Smart loads management
- Max. 10pcs parallel for on-grid and off-grid operation<sup>①</sup>
- Max. charging / discharging current of 120 A
- Generator compatible<sup>②</sup>

### Safe

- Battery terminal temperature detection
- IP65 protection degree
- Integrated SPD
- AFCI protection (optional)

info@solaxpower.com  
service@solaxpower.com



### Contact Us More Information

www.solaxpower.com

AU: +61 1300 476529

DE: +49 6142 4091664

Global: +86 571-56260008

UK: +44 2476 586998

NL: +31 (0) 852 737932

## DC INPUT

Max. PV array power [Wp]	6000	7360	8000	9200	10000	12000
Max. PV input power (PV1+PV2) [Wp]	4500	5500	6000	6900	7500	9000
Max. PV input voltage [V]	550					
Start output voltage [V]	110					
Nominal input voltage [V]	360					
MPPT voltage range [V]	80 ~ 520					
No. of independent MPPT / strings per MPPT	2 / PV1: 1 ; PV2: 1					
Max. input current [A]	16 / 16					
Max. short circuit current [A]	20 / 20					

## AC INPUT & OUTPUT

Nominal AC output power [W]	3000	3680	4000	4600	5000	6000
Max. AC output apparent power [VA]	3300	3680	4400	4600 (Germany 4600)	5000	6000
Max. AC output current [A]	15	16	20	20.9 (Germany 20)	22.7	27.3
Max. AC input apparent power [VA]	6000	7360	8000	9200	9200	9200
Max. AC input current [A]	26.1	32	34.8	40	40	40
Nominal voltage [V], frequency [Hz]	220 / 230 / 240, 50 / 60					
Displacement power factor	0.8 leading ~ 0.8 lagging					
THDi (rated power) [%]	< 3					

## BATTERY DATA

Battery type	Lithium® / Lead-Acid					
Max. charging / discharging current [A]	75			120		
Battery voltage range [V]	40 ~ 60					
Nominal battery voltage [V]	48					

## EPS OUTPUT (WITH BATTERY)

Nominal output apparent power [VA]	3000	3680	4000	4600	5000	6000
Peak apparent power [VA, s] <sup>①</sup>	6000, 10	7360, 10	8000, 10	9200, 10	10000, 10	12000, 10
Nominal output current [A]	13	16	17.4	20	21.7	26.1
Nominal voltage [V], frequency [Hz]	230, 50 / 60					
Switch time [ms]	< 10					

## Efficiency

MPPT Efficiency [%]	> 99.9					
Max. efficiency [%]	97.6					
Euro. efficiency [%]	97.0					

## POWER CONSUMPTION

Self consumption (night) [W]	Standby < 40, Shutdown < 10					
------------------------------	-----------------------------	--	--	--	--	--

## ENVIRONMENT LIMIT

Degree of protection	IP65					
Operating temperature range [°C]	-25 ~ +60 (derating above +45)					
Relative humidity [%]	0 ~ 100 (condensing)					
Max. operation altitude [m]	< 3000					
Noise emission (typical) [dB]	< 39			< 50		
Storage temperature [°C]	-25 ~ +70					

## GENERAL

Dimensions (WxHxD) [mm]	397 x 490 x 201					
Net weight [kg]	16.5			17.3		
Cooling concept	Natural			Smart cooling		
Topology	Transformerless for PV side / HF for battery side					
HMI Interface	LED + LCD					
Communication interfaces	CAN, RS485, CT, Meter, USB, NTC, WiFi, LAN, 4G (Optional), WiFi+Lan (Optional), WiFi+4GM (Optional)					
Warranty [years]	5					

## STANDARD

Safety	EN IEC 62109-1 / -2					
EMC	BS EN 50065-1					
Certification	NRS 097-2-1, IEC 61727, IEC 62116, PEA, MEA, BIS					

① To be released in Q3 2023;  
 ② & ③ To be released in Q4 2023;  
 ④ Depend on PV and battery capacity.

\*V1.2 Information may be subject to modify without notice.  
 650.00023.00